



NFT

Instructions & Grow Guide

Setting up the Gro-Tank

1. Place the Gro-Tank on a level surface. If placed on a bench ensure that the bench can support the weight of the Gro-Tank when full.



2. Place the channel onto the tank with the access opening at the same end as the solution max level indicators (the triangular ledges). Fix the tank and channel together with the plastic nuts and bolts provided. **Please note:** if you are using a GT205 or GN205 the channel rests on the tank so there is no need for nuts and bolts.



3. 24 hrs before transplanting fill the Gro-Tank with water to the solution level indicators. This allows the water temperature to rise to room temperature and for chlorine to escape from tap-water. If the water temperature is below 63°F (17°C) use a water heater to raise water temperature to 65°F (18°C).



FOR 1M GRO-TANK & GT150 TURN TO PAGE 5

4. Push the wide end of the delivery tube into the pump outlet, then place the black air-line tube onto the outside of the impellor shaft.

Please Note: Image shows an Oxy Pump, supplied with UK Systems only. A universal water pump is supplied for all other markets.



5. Place the pump in the tank and shake to remove any air bubbles. Next, fix the pump to the base of the tank using the rubber suckers. Put the narrow end of the delivery tube through the hole in the tray and place the black air-line and valve outside of the tank.



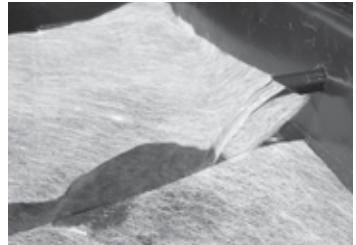
6. The valve can be adjusted by turning the top clockwise to close and anti clockwise to open. We recommend you use it fully opened.



7. Place 1 layer of spreader mat onto the channel. The spreader mat will spread nutrient solution along the channel. Overhang the spreader mat slightly into the tank.



8. Connect the pump to the mains supply and switch on. Water should flow onto the channel, soaking the spreader mat. You may need to press the spreader mat onto the channel to ensure that it becomes soaked. If you need to adjust the flow rate of the pump, slide the vent on the side of the pump. Now turn off the pump until after you have transplanted your plants.



9. Cut holes in your top-plate where you want to place your plants. Plants grown in NFT like their roots to run together. If you have space train the stems away from each other. Put the top-plate in position so that the hinged cover is over the access opening. Use the adhesive pads to attach the long edge of the top-plate to the tank. If you are using a GT205 or GN205 simply place the top-plate on the channel. The example shows a GT424/GN424 system.



Gro-Tank kits



GT205

L695mm x W385mm x H185mm



GT424

L1010mm x W485mm x H205mm



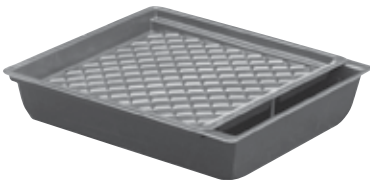
GT604

L1525mm x W485mm x H190mm



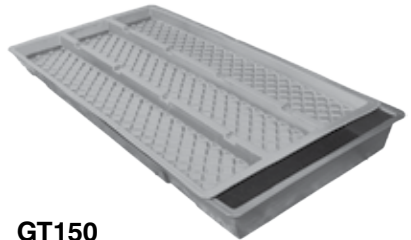
GT901

L2110mm x W530mm x H215mm



GT100

L1200mm x W1060mm x H215mm



GT150

L1850mm x W1000mm x H150mm

P0000116